



Santa Barbara Modern

BUILD PLAN

This build plan features an elevation of modern stone, stucco and limestone accents completed with a tile roof and bespoke arched windows. The C-Shape floor plan has a luxurious interior including floor-to-ceiling windows, an oversized quartz island, a walk-in appliance pantry, and a temperature-controlled wine room.

4

Bedrooms

4.2

Bathrooms

3

Car Garage

5,134

Sqft

HOME FEATURES

- Covered Outdoor Living

Wine Room

Appliance Pantry

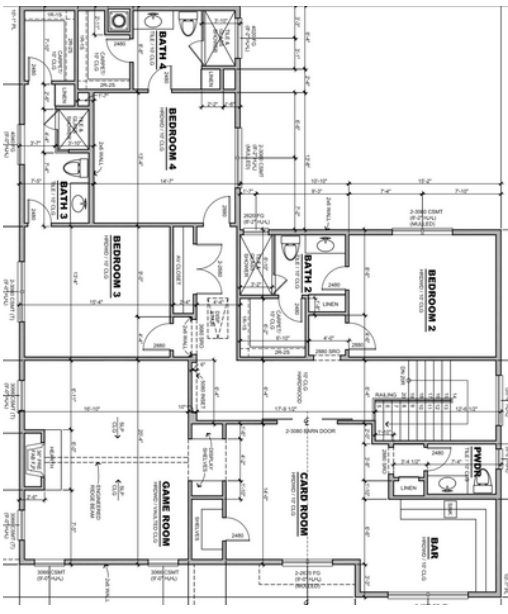
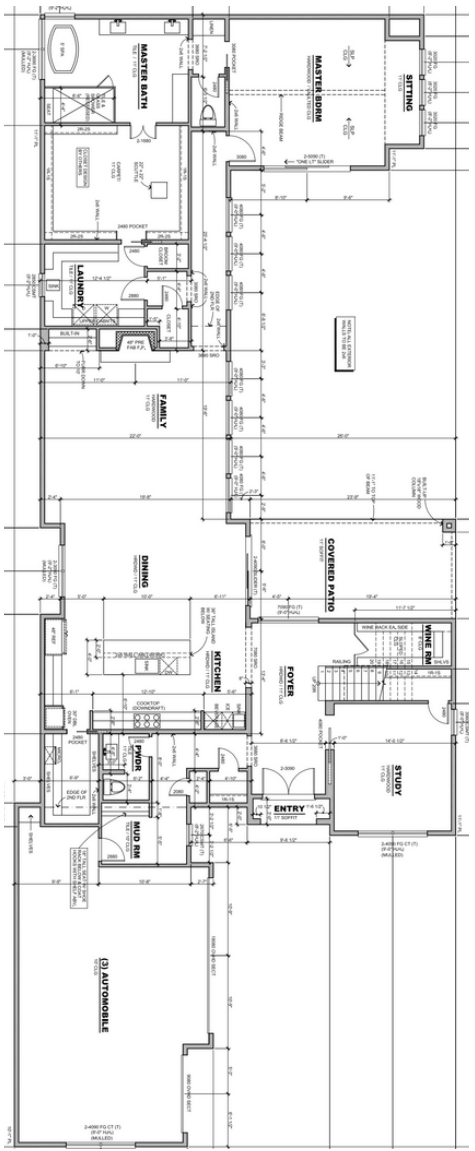
Home Automation
- Wood-clad Jeld-Wen Windows

Foam-encapsulated + Sound Insulated


Gameroom with Lounge + Wet Bar


Thermador Appliances


FLOOR PLAN




CONTACT US

- 

www.AHDLH.build | www.Avadene.com
- 

(469) 610-1212
- 

michelle@avadene.com
- 

12200 N Stemmons Fwy, Ste 220, Dallas, TX 75234

