



# Modern Tudor

## BUILD PLAN

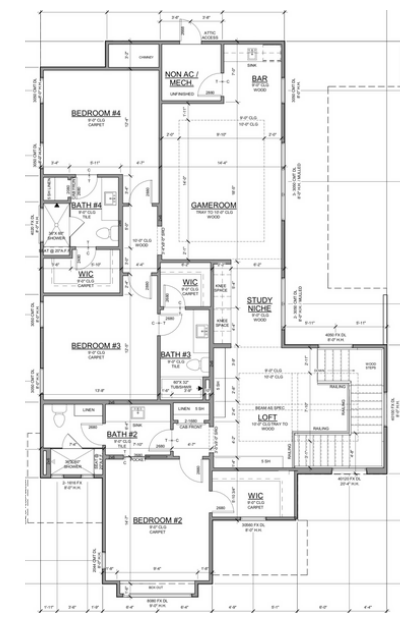
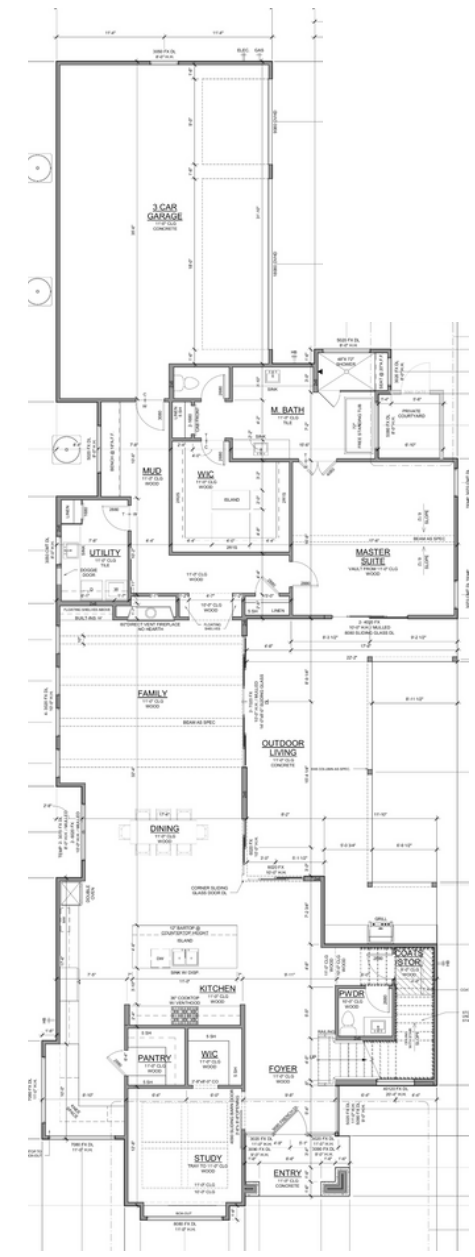
This build plan features an elevation of stucco with accent siding and limestone entry completed with a standing seam roof. The C-Shape floor plan has a luxurious interior including floor to ceiling windows, an oversized quartz island, a walk-in appliance pantry.

4 Bedrooms      4.2 Bathrooms  
3 Car Garage      4,171 Sqft





## HOME FEATURES

- |                        |                                     |
|------------------------|-------------------------------------|
| Covered Outdoor Living | Wood-clad Jeld-Wen Windows          |
| Library / Study        | Foam-encapsulated + Sound Insulated |
| Appliance Pantry       | Gameroom with Lounge + Wet Bar      |
| Home Automation        | Thermador Appliances                |

## FLOOR PLAN



## CONTACT US

-  [www.AHDLH.build](http://www.AHDLH.build) | [www.Avadene.com](http://www.Avadene.com)
-  (469) 610-1212
-  [michelle@avadene.com](mailto:michelle@avadene.com)
-  12200 N Stemmons Fwy, Ste 220, Dallas, TX 75234

