



Mallorca Modern

BUILD PLAN

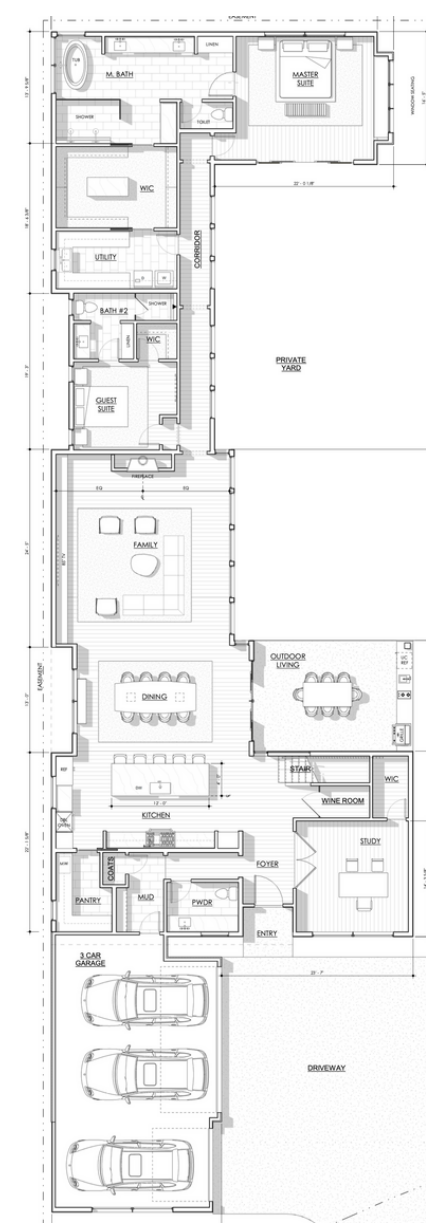
This build plan features an elevation composed of authentic hand cut stone and stucco as found in the Balearic Islands. The C-Shape floor plan has a luxurious interior including floor-to-ceiling windows, an oversized quartz island, a walk-in appliance pantry, and a temperature-controlled wine room.

5 Bedrooms 5.2 Bathrooms
3 Car Garage 5,308 Sqft





HOME FEATURES

- | | |
|------------------------|-------------------------------------|
| Covered Outdoor Living | Wood-clad Jeld-Wen Windows |
| Wine Room | Foam-encapsulated + Sound Insulated |
| Appliance Pantry | Gameroom with Lounge + Wet Bar |
| Home Automation | Thermador Appliances |

FLOOR PLAN



CONTACT US

-  www.AHDDH.build | www.Avadene.com
-  (469) 610-1212
-  michelle@avadene.com
-  12200 N Stemmons Fwy, Ste 220, Dallas, TX 75234

